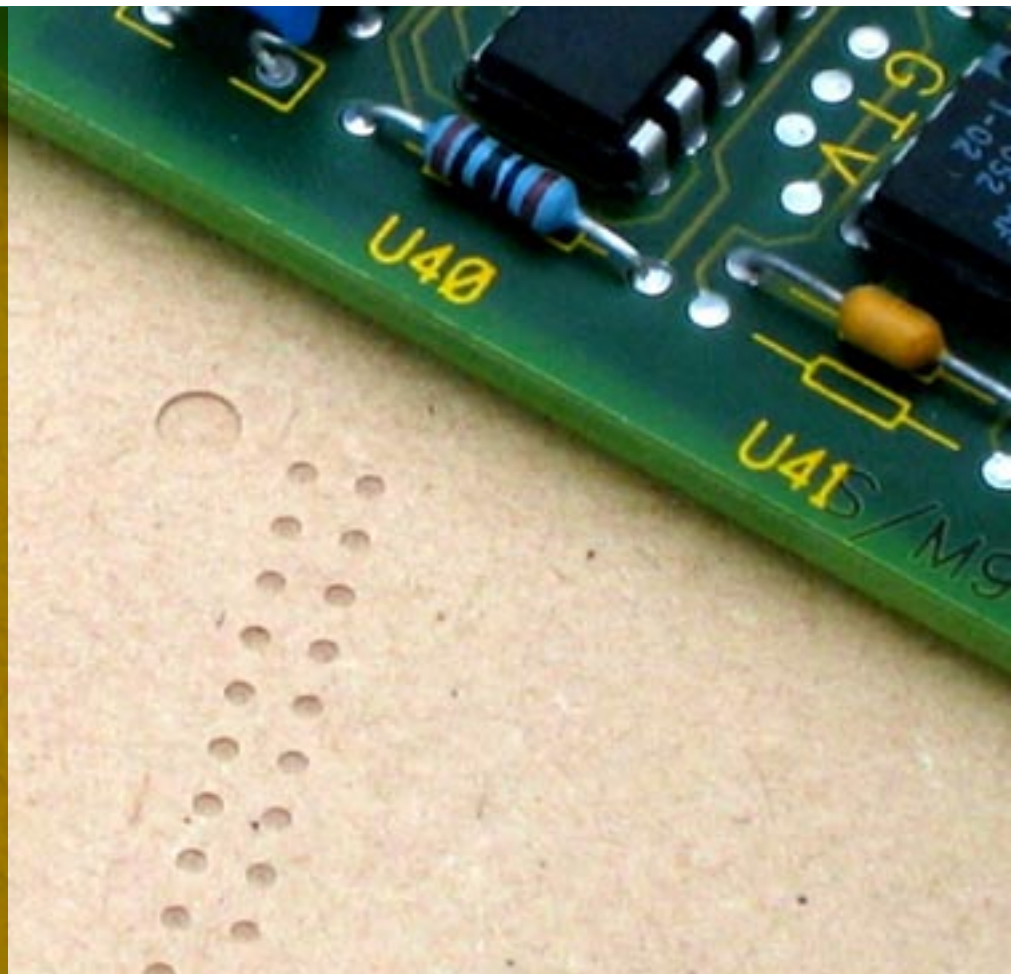




PATINNA

hdf

high density



Thin with
superior
surface

Light, bright Southland pine is chosen from renewable plantation forests to provide finest quality raw material for Patinna Medium Density Fibreboard (MDF & HDF). A superbly smooth finish, uniform density and a finely textured complexion result in a range of HDF products for all your uses. Available on request as FSC certified, we also offer NAF products and those which meet LEED criteria and Phase 1 and Phase 2 CARB emissions levels. Created by a highly sophisticated, technologically efficient MDF manufacturing process, Patinna HDF can be delivered to you worldwide through either of our two sales offices.

We invite you to work with Patinna. Cut it, shape it, make it your own. And, when the opportunity arises, tell us what you think. Your input matters to us and is a vital element in our manufacturing process.

Patinna - HDF High Density

Patinna-HDF High Density was developed for use where physical property integrity and surface finish are important. The average density of more than 880 kg/m³ (55 lb/ft³) ensures high core strength and face density.

Patinna-HDF High Density can substitute veneer cross bands in hardwood veneered plywoods by providing a superior smooth surface to reduce potential surface defects such as telegraphing of expensive, thin surface veneers. Its high internal bond is able to withstand most hot-press conditions.

Now available with Certified 90-minute Fire Rating for door construction in both 3.0mm (0.12in) and 6.0mm (0.24in) thick high density panel to give you more options.

The high quality surface of Patinna-HDF High Density also makes an excellent white board substrate allowing application of paint or laminate. In the electronics industry, the hard uniform properties of our 2.5mm (0.10 in) product perform well as backer board in the printed circuit board (PCB) manufacturing process. Contact your local sales office for further information.



DONGWHA PATINNA NZ LIMITED
www.patinna.com

Patinna-HDF High Density Aim Properties

when tested to JIS A 5905 - 2003

PROPERTY	METRIC	UF Resin			Phenolic Resin		
		1.6mm	2.3mm	2.5mm	1.6mm	2.3mm	2.5mm
Density	kg/m ³	900	940	880	900	940	880
Weight	Kg/m ²	1.4	2.2	2.2	1.4	2.2	2.2
Panels	Per Pack	380	265	340	380	265	340
Internal Bond	MPa	1.7	2.0	1.5	1.7	2.0	1.5
Moisture Content	%	7.0	7.0	7.0	7.0	6.5	7.0
Thickness Swell	%	30	30	30	30	28	30
MOE	MPa	5000	5000	5000	4600	4600	4600
MOR	MPa	45	55	55	45	65	55
Formaldehyde	mg/L	1.5	1.5	1.5	na	na	na

PROPERTY	IMPERIAL	0.063"	0.091"	0.098"	0.063"	0.091"	0.091"
Density	lb/ft ³	56	59	55	56	59	55
Weight	lb/ft ²	0.3	0.4	0.5	0.3	0.4	0.5
Panels	Per Pack	380	265	340	380	265	340
Internal Bond	lb/in ²	247	290	218	247	290	218
Moisture Content	%	7.0	7.0	7.0	7.0	6.5	7.0
Thickness Swell	%	30	30	30	30	28	30
MOE	lb/in ²	725000	725000	725000	667000	667000	667000
MOR	lb/in ²	6525	7975	7975	6525	9425	7975

GENERAL TOLERANCES	
Length/Width	+/- 2 mm (+/- 0.079 in)
Thickness Tolerance	+/- 0.15 mm (0.006 in)
Straightness	1.125 mm/m (0.015 in/ft)
Squareness	<1.5 mm/m (<0.018 in/ft)
Sanding grit	180

For further Patinna specifications and production information please visit

www.patinna.com



NOTE: These values represent typical values and are guidelines only. Please note that Dongwha Patinna NZ Limited reserve the right to change product specifications without notice. For the most recent specifications please visit our website: www.patinna.com.

All Patinna production meets ISO9001 international standard, and the Patinna environment is managed according to ISO14001 international environmental management systems standard. This embodies our commitment to pursuing a path of continual improvement in environmental management.

Patinna® and its logo are registered trademarks of Dongwha Patinna NZ Limited. "The Master Ingredient™" is a trademark of Dongwha Patinna NZ Limited.

New Zealand Sales Office

Dongwha Patinna NZ Limited
PO Box 189
Gore
New Zealand
Phone: +64-3-209-3100
Facsimile: +64-3-209-3721

USA Sales Office

Dongwha USA, Inc.
7000 SW Hampton St
Suite 205, Tigard
OR 97223, USA
Phone: +1-503-620-7663
Facsimile: +1-503-620-9704